

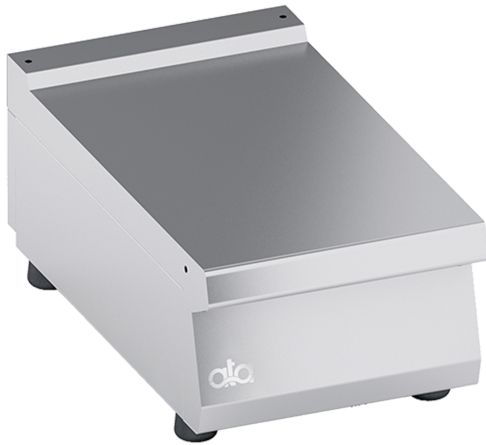
K7NNE05TT

TOP NEUTRAL ELEMENT 1/2 MODULE



PRODUCT DESCRIPTION

Reinforced stainless steel frame, suitable for hard work.
Rounded edges for easy cleaning.
Laser-cut work top finishing for "head-to-head" matching and binding fastening.
Accessories available **on demand**.



TECHNICAL SPECIFICATIONS

Width: 400 mm
Depth: 700 mm
Height: 265 mm
Weight: 13 kg
Volume: 0.21 m³

